

LILRA2 Monoclonal Antibody

Description

Product type	Antibody
Code	BT-MCA4679
Host	Mouse
Isotype	Mouse IgG1
Size	100µL, 50µL
Immunogen	Purified recombinant fragment of human LILRA2 (AA: extra 316-449) expressed in E. Coli.
Mol wt	53kDa
Species reactivity	Human
Clonality	Monoclonal
Recommended application	FCM
Concentration	N/A
Full name	N/A
Synonyms	ILT1;LIR7;CD85H;LIR-7

This product is for research use only, not for use in human, therapeutic or diagnostic procedure.

Background

This gene encodes a member of a family of immunoreceptors that are expressed predominantly on monocytes and B cells, and at lower levels on dendritic cells and natural killer cells. The encoded protein is an activating receptor that inhibits dendritic cell differentiation and antigen presentation and suppresses innate immune response. Alternatively spliced transcript variants encoding different isoforms have been found. This gene is located in a cluster of related genes on chromosome 19 and there is a pseudogene for this gene on chromosome 3.

Recommended Dilution

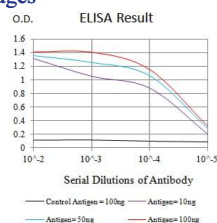
WB: 1:500 - 1:2000

FCM: 1:200 - 1:400

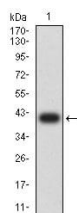
ELISA: 1:10000

Not yet tested in other applications.

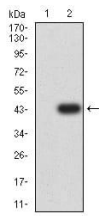
Images



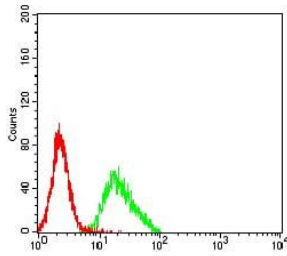
Black line: Control Antigen (100 ng);Purple line: Antigen (10ng); Blue line: Antigen (50 ng); Red line:Antigen (100 ng)



Western blot analysis using LILRA2 mAb against human LILRA2 (AA: extra 316-449) recombinant protein. (Expected MW is 40.6 kDa)



Western blot analysis using LILRA2 mAb against HEK293 (1) and LILRA2 (AA: extra 316-449)-hlgGfc transfected HEK293 (2) cell lysate.



Flow cytometric analysis of K562 cells using LILRA2 mouse mAb (green) and negative control (red).

Storage

Store at 4°C short term. Aliquot and store at -20°C long term.

501 Changsheng S Rd, Nanhu Dist, Jiaxing, Zhejiang, China

Tel: 86 21 31007137 | E-mail: save@bt-laboratory.com | www.bt-laboratory.com