

NEFH Monoclonal Antibody

Description

| | |
|--------------------------------|--|
| Product type | Antibody |
| Code | BT-MCA4687 |
| Host | Mouse |
| Isotype | Mouse IgG1 |
| Size | 100µL, 50µL |
| Immunogen | Purified recombinant fragment of human NEFH (AA: 968-1020) expressed in E. Coli. |
| Mol wt | 112.4kDa |
| Species reactivity | Human |
| Clonality | Monoclonal |
| Recommended application | IHC |
| Concentration | N/A |
| Full name | N/A |
| Synonyms | NFH |

This product is for research use only, not for use in human, therapeutic or diagnostic procedure.

Background

N/A

Recommended Dilution

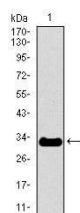
WB: 1:500 - 1:2000

IHC-p: 1:200 - 1:1000

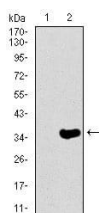
ELISA: Propose dilution 1:10000

Not yet tested in other applications.

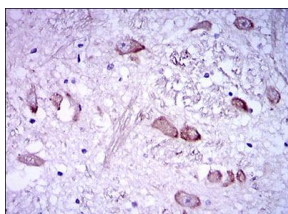
Images



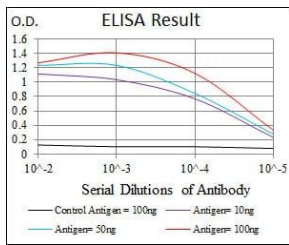
Western blot analysis using NEFH mAb against human NEFH recombinant protein. (Expected MW is 31.2 kDa)



Western blot analysis using NEFH mAb against HEK293 (1) and NEFH (AA: 968-1020)-hIgGfc transfected HEK293 (2) cell lysate.



Immunohistochemical analysis of paraffin-embedded medulla oblongata tissues using NEFH mouse mAb with DAB staining.



Black line: Control Antigen (100 ng); Purple line: Antigen(10ng); Blue line: Antigen (50 ng); Red line: Antigen (100 ng);

Storage

Store at 4°C short term. Aliquot and store at -20°C long term.

501 Changsheng S Rd, Nanhu Dist, Jiaxing, Zhejiang, China

Tel: 86 21 31007137 | E-mail: save@bt-laboratory.com | www.bt-laboratory.com