

CD49C Monoclonal Antibody

Description

Product type	Antibody
Code	BT-MCA4699
Host	Mouse
Isotype	Mouse IgG1
Size	100µL, 50µL
Immunogen	Purified recombinant fragment of human CD49C (AA: extra 63-248) expressed in E. Coli.
Mol wt	116.6kDa
Species reactivity	Human
Clonality	Monoclonal
Recommended application	WB,FCM
Concentration	N/A
Full name	N/A
Synonyms	ITGA3;VL3A;FRP-2;GAPB3;ILNEB;MSK18;VCA-2;VLA3a;GAP-B3

This product is for research use only, not for use in human, therapeutic or diagnostic procedure.

Background

The gene encodes a member of the integrin alpha chain family of proteins. Integrins are heterodimeric integral membrane proteins composed of an alpha chain and a beta chain that function as cell surface adhesion molecules. The encoded preproprotein is proteolytically processed to generate light and heavy chains that comprise the alpha 3 subunit. This subunit joins with a beta 1 subunit to form an integrin that interacts with extracellular matrix proteins including members of the laminin family. Expression of this gene may be correlated with breast cancer metastasis.

Recommended Dilution

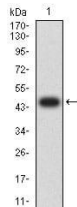
WB: 1:500 - 1:2000

FCM: 1:200 - 1:400

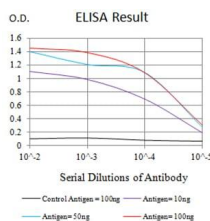
ELISA: 1:10000

Not yet tested in other applications.

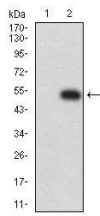
Images



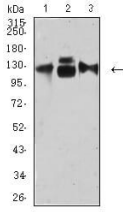
Western blot analysis using CD49C mAb against human CD49C (AA: extra 63-248) recombinant protein. (Expected MW is 47 kDa)



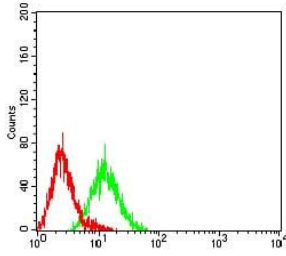
Black line: Control Antigen (100 ng);Purple line: Antigen (10ng); Blue line: Antigen (50 ng); Red line:Antigen (100 ng)



Western blot analysis using CD49C mAb against HEK293 (1) and CD49C (AA: extra 63-248)-hlgGFc transfected HEK293 (2) cell lysate.



Western blot analysis using CD49C mouse mAb against HepG2 (1), HUVEC (2), and HUVE-12 (3) cell lysate.



Flow cytometric analysis of HL-60 cells using CD49C mouse mAb (green) and negative control (red).

Storage

Store at 4°C short term. Aliquot and store at -20°C long term.

501 Changsheng S Rd, Nanhu Dist, Jiaxing, Zhejiang, China

Tel: 86 21 31007137 | E-mail: save@bt-laboratory.com | www.bt-laboratory.com