

## SLC45A3 Monoclonal Antibody

### Description

<b>Product type</b>	Antibody
<b>Code</b>	BT-MCA4710
<b>Host</b>	Mouse
<b>Isotype</b>	Mouse IgG2b
<b>Size</b>	100µL, 50µL
<b>Immunogen</b>	Purified recombinant fragment of human SLC45A3 (AA: 354-553) expressed in E. Coli.
<b>Mol wt</b>	59 kDa
<b>Species reactivity</b>	Human
<b>Clonality</b>	Monoclonal
<b>Recommended application</b>	WB,FCM
<b>Concentration</b>	N/A
<b>Full name</b>	N/A
<b>Synonyms</b>	PRST;IPCA6;IPCA-2;IPCA-6;IPCA-8;PCANAP2;PCANAP6;PCANAP8

This product is for research use only, not for use in human, therapeutic or diagnostic procedure.

### Background

SLC45A3 (Solute Carrier Family 45 Member 3) is a Protein Coding gene. Diseases associated with SLC45A3 include Villous Adenoma and Prostate Cancer. Among its related pathways are Glycosaminoglycan metabolism and Transport of glucose and other sugars, bile salts and organic acids, metal ions and amine compounds. An important paralog of this gene is SLC45A4.

### Recommended Dilution

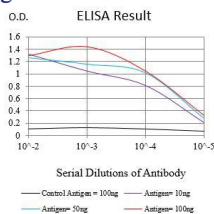
WB: 1:500 - 1:2000

FCM: 1:200 - 1:400

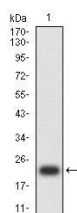
ELISA: 1:10000

Not yet tested in other applications.

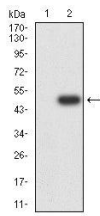
### Images



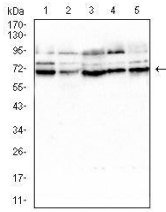
Black line: Control Antigen (100 ng);Purple line: Antigen (10ng); Blue line: Antigen (50 ng); Red line:Antigen (100 ng)



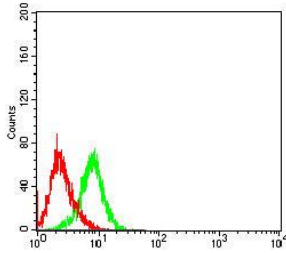
Western blot analysis using SLC45A3 mAb against human SLC45A3 (AA: 354-553) recombinant protein. (Expected MW is 23.3 kDa)



Western blot analysis using SLC45A3 mAb against HEK293-6e (1) and SLC45A3 (AA: 354-553)-hlgGFc transfected HEK293-6e (2) cell lysate.



Western blot analysis using SLC45A3 mouse mAb against LNCap (1), PC-3 (2), HepG2 (3), SMMC-7721 (4), and DU145 (5) cell lysate.



Flow cytometric analysis of PC-3 cells using SLC45A3 mouse mAb (green) and negative control (red).

### Storage

Store at 4°C short term. Aliquot and store at -20°C long term.

501 Changsheng S Rd, Nanhu Dist, Jiaxing, Zhejiang, China

Tel: 86 21 31007137 | E-mail: [save@bt-laboratory.com](mailto:save@bt-laboratory.com) | [www.bt-laboratory.com](http://www.bt-laboratory.com)