

CER1 Monoclonal Antibody

Description

Product type	Antibody
Code	BT-MCA4730
Host	Mouse
Isotype	Mouse IgG1
Size	100µL, 50µL
Immunogen	Purified recombinant fragment of human CER1 expressed in E. Coli.
Mol wt	30kDa
Species reactivity	Human
Clonality	Monoclonal
Recommended application	Others
Concentration	N/A
Full name	N/A
Synonyms	DAND4

This product is for research use only, not for use in human, therapeutic or diagnostic procedure.

Background

CER1: cerberus 1, cysteine knot superfamily, homolog (*Xenopus laevis*). It is a cytokine member of the cysteine knot superfamily, characterized by nine conserved cysteines and a cysteine knot region. The cerberus-related cytokines, together with Dan and DRM/Gremlin, represent a group of bone morphogenetic protein (BMP) antagonists that can bind directly to BMPs and inhibit their activity.

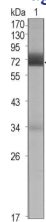
Recommended Dilution

WB: 1:500 - 1:2000

ELISA: 1:10000

Not yet tested in other applications.

Images



Western blot analysis using CER1 mouse mAb against CER1 (aa18-267)-hIgGFc transfected HEK293 cell lysate (1).

Storage

Store at 4°C short term. Aliquot and store at -20°C long term.