

LPL Monoclonal Antibody

Description

| | |
|--------------------------------|--|
| Product type | Antibody |
| Code | BT-MCA4732 |
| Host | Mouse |
| Isotype | Mouse IgG1 |
| Size | 100 μ L, 50 μ L |
| Immunogen | Purified recombinant fragment of LPL expressed in E. Coli. |
| Mol wt | 53.1kDa |
| Species reactivity | Human |
| Clonality | Monoclonal |
| Recommended application | WB |
| Concentration | N/A |
| Full name | N/A |
| Synonyms | LIPD, HDLCQ11 |

This product is for research use only, not for use in human, therapeutic or diagnostic procedure.

Background

LPL: lipoprotein lipase, also known as LIPD, HDLCQ11. Entrez Protein: NP_000228. It is expressed in heart, muscle, and adipose tissue. LPL functions as a homodimer, and has the dual functions of triglyceride hydrolase and ligand/bridging factor for receptor-mediated lipoprotein uptake. Severe mutations that cause LPL deficiency result in type I hyperlipoproteinemia, while less extreme mutations in LPL are linked to many disorders of lipoprotein metabolism.

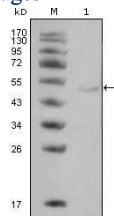
Recommended Dilution

WB: 1:500 - 1:2000

ELISA: 1:10000

Not yet tested in other applications.

Images



Western blot analysis using LPL mouse mAb against Hela cell lysate (1).

Storage

Store at 4°C short term. Aliquot and store at -20°C long term.