

## phospho-Eralpha(Tyr-537) Monoclonal Antibody

### Description

Product type	Antibody
Code	BT-MCA4737
Host	Mouse
Isotype	Mouse IgG1
Size	100μL, 50μL
Immunogen	Synthesized peptide of human Eralpha(AA: 530-542 (Tyr-537)) expressed in E. Coli.
Mol wt	66.2kDa
Species reactivity	Human
Clonality	Monoclonal
Recommended application	FCM
Concentration	N/A
Full name	N/A
Synonyms	ESR1;ER;ESR;Era;ESRA;ESTRR;NR3A1

This product is for research use only, not for use in human, therapeutic or diagnostic procedure.

### Background

N/A

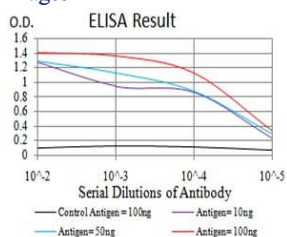
### Recommended Dilution

FCM: 1:200 - 1:400

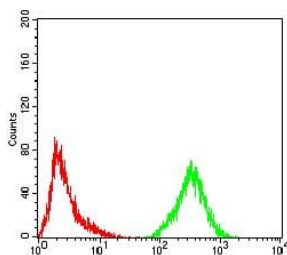
ELISA: 1:10000

Not yet tested in other applications.

### Images



Black line: Control Antigen (100 ng); Purple line: Antigen(10ng); Blue line: Antigen (50 ng); Red line: Antigen (100 ng);



Flow cytometric analysis of HeLa cells using Eralpha(Tyr-537) mouse mAb (green) and negative control (red).

### Storage

Store at 4°C short term. Aliquot and store at -20°C long term.

