

## GPR83 Monoclonal Antibody

### Description

<b>Product type</b>	Antibody
<b>Code</b>	BT-MCA4738
<b>Host</b>	Mouse
<b>Isotype</b>	Mouse IgG1
<b>Size</b>	100µL, 50µL
<b>Immunogen</b>	Purified recombinant fragment of human GPR83 (AA: extra mix) expressed in E. Coli.
<b>Mol wt</b>	48.3kDa
<b>Species reactivity</b>	Others
<b>Clonality</b>	Monoclonal
<b>Recommended application</b>	FCM
<b>Concentration</b>	N/A
<b>Full name</b>	N/A
<b>Synonyms</b>	GIR;GPR72

This product is for research use only, not for use in human, therapeutic or diagnostic procedure.

### Background

GPR83 (G Protein-Coupled Receptor 83) is a Protein Coding gene. Diseases associated with GPR83 include Tick Infestation and Branchiootic Syndrome. Among its related pathways are Signaling by GPCR and GPCRs, Other. Gene Ontology (GO) annotations related to this gene include G protein-coupled receptor activity and neuropeptide Y receptor activity. An important paralog of this gene is PRLHR.

### Recommended Dilution

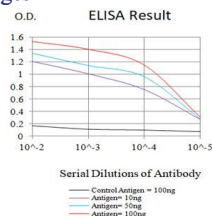
WB: 1:500 - 1:2000

FCM: 1:200 - 1:400

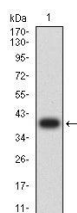
ELISA: 1:10000

Not yet tested in other applications.

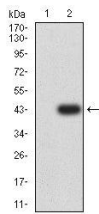
### Images



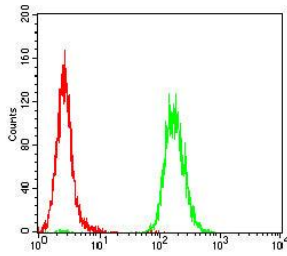
Black line: Control Antigen (100 ng);Purple line: Antigen (10ng); Blue line: Antigen (50 ng); Red line:Antigen (100 ng)



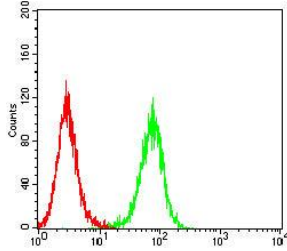
Western blot analysis using GPR83 mAb against human GPR83 (AA: extra mix) recombinant protein. (Expected MW is 39 kDa)



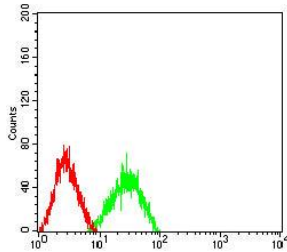
Western blot analysis using GPR83 mAb against HEK293-6e (1) and human GPR83 (AA: extra mix)-hIgGfc transfected HEK293-6e (2) cell lysate.



Flow cytometric analysis of HeLa cells using GPR83 mouse mAb (green) and negative control (red).



Flow cytometric analysis of HepG2 cells using GPR83 mouse mAb (green) and negative control (red).



Flow cytometric analysis of HT-29 cells using GPR83 mouse mAb (green) and negative control (red).

### Storage

Store at 4°C short term. Aliquot and store at -20°C long term.

501 Changsheng S Rd, Nanhu Dist, Jiaxing, Zhejiang, China

Tel: 86 21 31007137 | E-mail: save@bt-laboratory.com | www.bt-laboratory.com