

HTRA2 Monoclonal Antibody

Description

Product type	Antibody
Code	BT-MCA4747
Host	Mouse
Isotype	Mouse IgG1
Size	100µL, 50µL
Immunogen	Purified recombinant fragment of human HTRA2 (AA: 278-458) expressed in E. Coli.
Mol wt	48.8kDa
Species reactivity	Human,Mouse,Rat
Clonality	Monoclonal
Recommended application	WB,IHC,FCM
Concentration	N/A
Full name	N/A
Synonyms	OMI;MGCA8;PARK13;PRSS25

This product is for research use only, not for use in human, therapeutic or diagnostic procedure.

Background

This gene encodes a serine protease. The protein has been localized in the endoplasmic reticulum and interacts with an alternatively spliced form of mitogen-activated protein kinase 14. The protein has also been localized to the mitochondria with release to the cytosol following apoptotic stimulus. The protein is thought to induce apoptosis by binding the apoptosis inhibitory protein baculoviral IAP repeat-containing 4. Nuclear localization of this protein has also been observed. Alternate splicing of this gene results in multiple transcript variants encoding different isoforms. [provided by RefSeq, Mar 2016]

Recommended Dilution

WB: 1:500 - 1:2000

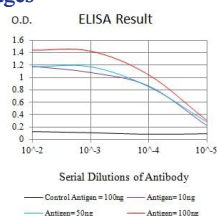
IHC-p: 1:200 - 1:1000

FCM: 1:200 - 1:400

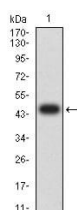
ELISA: 1:10000

Not yet tested in other applications.

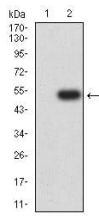
Images



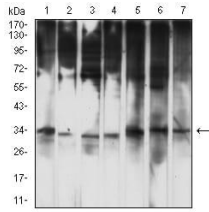
Black line: Control Antigen (100 ng);Purple line: Antigen (10ng); Blue line: Antigen (50 ng); Red line:Antigen (100 ng)



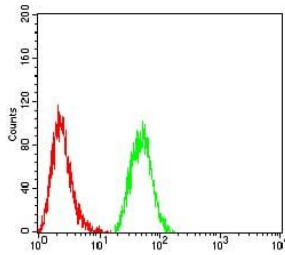
Western blot analysis using HTRA2 mAb against human HTRA2 (AA: 278-458) recombinant protein. (Expected MW is 46 kDa)



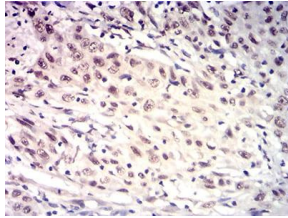
Western blot analysis using HTRA2 mAb against HEK293 (1) and HTRA2 (AA: 278-458)-hIgGFc transfected HEK293 (2) cell lysate.



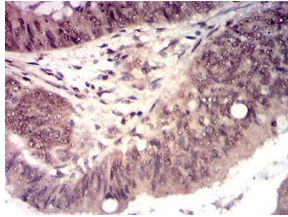
Western blot analysis using HTRA2 mouse mAb against HL-60 (1), HepG2 (2), MCF-7 (3), HeLa (4), PC-12 (5), C2C12 (6), and Raji (7) cell lysate.



Flow cytometric analysis of HeLa cells using HTRA2 mouse mAb (green) and negative control (red).



Immunohistochemical analysis of paraffin-embedded esophageal cancer tissues using HTRA2 mouse mAb with DAB staining.



Immunohistochemical analysis of paraffin-embedded esophageal cancer tissues using HTRA2 mouse mAb with DAB staining.

Storage

Store at 4°C short term. Aliquot and store at -20°C long term.

501 Changsheng S Rd, Nanhu Dist, Jiaxing, Zhejiang, China

Tel: 86 21 31007137 | E-mail: save@bt-laboratory.com | www.bt-laboratory.com