

IGF1R Monoclonal Antibody

Description

| | |
|--------------------------------|---|
| Product type | Antibody |
| Code | BT-MCA4754 |
| Host | Mouse |
| Isotype | Mouse IgG2a |
| Size | 100µL, 50µL |
| Immunogen | Purified recombinant fragment of human IGF1R (AA: extra(741-935)) expressed in E. Coli. |
| Mol wt | 154.8kDa |
| Species reactivity | Others |
| Clonality | Monoclonal |
| Recommended application | WB,FCM |
| Concentration | N/A |
| Full name | N/A |
| Synonyms | IGFR;CD221;IGFIR;JTK13 |

This product is for research use only, not for use in human, therapeutic or diagnostic procedure.

Background

This receptor binds insulin-like growth factor with a high affinity. It has tyrosine kinase activity. The insulin-like growth factor I receptor plays a critical role in transformation events. Cleavage of the precursor generates alpha and beta subunits. It is highly overexpressed in most malignant tissues where it functions as an anti-apoptotic agent by enhancing cell survival. Alternatively spliced transcript variants encoding distinct isoforms have been found for this gene.

Recommended Dilution

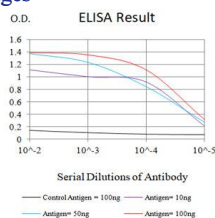
WB: 1:500 - 1:2000

FCM: 1:200 - 1:400

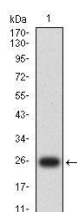
ELISA: 1:10000

Not yet tested in other applications.

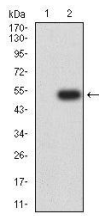
Images



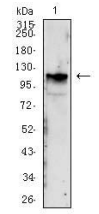
Black line: Control Antigen (100 ng);Purple line: Antigen (10ng); Blue line: Antigen (50 ng); Red line:Antigen (100 ng)



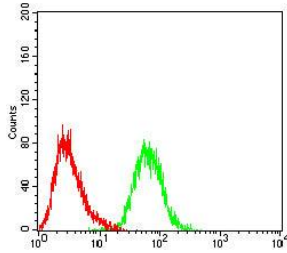
Western blot analysis using IGF1R mAb against human IGF1R (AA: extra(741-935)) recombinant protein. (Expected MW is 25.2 kDa)



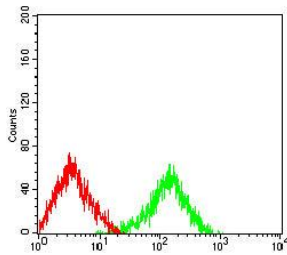
Western blot analysis using IGF1R mAb against HEK293-6e (1) and IGF1R (AA: extra(741-935))-hlgGFc transfected HEK293-6e (2) cell lysate.



Western blot analysis using IGF1R mouse mAb against NIH3T3 (1), cell lysate.



Flow cytometric analysis of HepG2 cells using IGF1R mouse mAb (green) and negative control (red).



Flow cytometric analysis of Lovo cells using IGF1R mouse mAb (green) and negative control (red).

Storage

Store at 4°C short term. Aliquot and store at -20°C long term.

501 Changsheng S Rd, Nanhu Dist, Jiaxing, Zhejiang, China

Tel: 86 21 31007137 | E-mail: save@bt-laboratory.com | www.bt-laboratory.com