

EPCAM Monoclonal Antibody

Description

Product type	Antibody
Code	BT-MCA4756
Host	Mouse
Isotype	Mouse IgG2a
Size	100µL, 50µL
Immunogen	Purified recombinant fragment of human EPCAM (AA: extra(116-265)) expressed in E. Coli.
Mol wt	35kDa
Species reactivity	Others
Clonality	Monoclonal
Recommended application	WB,IHC,FCM
Concentration	N/A
Full name	N/A
Synonyms	ESA;KSA;M4S1;MK-1;DIAR5;EGP-2;EGP40;KS1/4;MIC18;TROP1;EGP314;HNPCC8;TACSTD1

This product is for research use only, not for use in human, therapeutic or diagnostic procedure.

Background

This gene encodes a carcinoma-associated antigen and is a member of a family that includes at least two type I membrane proteins. This antigen is expressed on most normal epithelial cells and gastrointestinal carcinomas and functions as a homotypic calcium-independent cell adhesion molecule. The antigen is being used as a target for immunotherapy treatment of human carcinomas. Mutations in this gene result in congenital tufting enteropathy. [provided by RefSeq, Dec 2008]

Recommended Dilution

WB: 1:500 - 1:2000

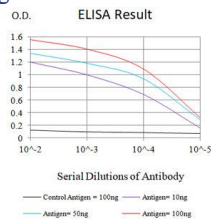
IHC-p: 1:200-1:1000

FCM: 1:200-1:400

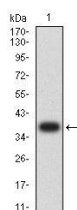
ELISA: 1:10000

Not yet tested in other applications.

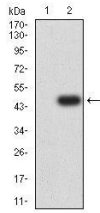
Images



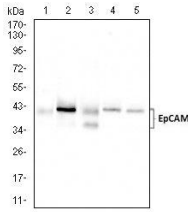
Black line: Control Antigen (100 ng);Purple line: Antigen (10ng); Blue line: Antigen (50 ng); Red line: Antigen (100 ng)



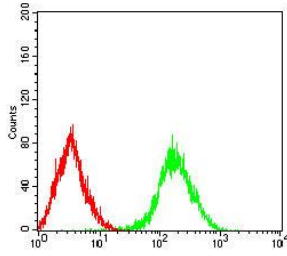
Western blot analysis using EPCAM mAb against human EPCAM (AA: extra(116-265)) recombinant protein. (Expected MW is 38 kDa)



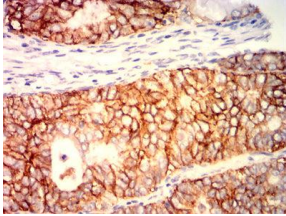
Western blot analysis using EPCAM mAb against HEK293-6e (1) and EPCAM (AA: extra(116-265))-hIgGFc transfected HEK293-6e (2) cell lysate.



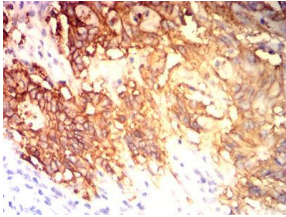
Western blot analysis using EPCAM mouse mAb against HCT116 (1), HT-29 (2), SW480 (3), SW-620 (4), and T47D (5) cell lysate.



Flow cytometric analysis of Lovo cells using EPCAM mouse mAb (green) and negative control (red).



Immunohistochemical analysis of paraffin-embedded cervical cancer tissues using EPCAM mouse mAb with DAB staining.



Immunohistochemical analysis of paraffin-embedded colon cancer tissues using EPCAM mouse mAb with DAB staining.

Storage

Store at 4°C short term. Aliquot and store at -20°C long term.

501 Changsheng S Rd, Nanhu Dist, Jiaxing, Zhejiang, China

Tel: 86 21 31007137 | E-mail: save@bt-laboratory.com | www.bt-laboratory.com