

ULBP2 Monoclonal Antibody

Description

Product type	Antibody
Code	BT-MCA4764
Host	Mouse
Isotype	Mouse IgG1
Size	100µL, 50µL
Immunogen	Purified recombinant fragment of human ULBP2 (AA: 26-216) expressed in E. Coli.
Mol wt	27.4kDa
Species reactivity	Others
Clonality	Monoclonal
Recommended application	ICC,FCM
Concentration	N/A
Full name	N/A
Synonyms	N2DL2;RAET1H;RAET1L;NKG2DL2;ALCAN-alpha

This product is for research use only, not for use in human, therapeutic or diagnostic procedure.

Background

This gene encodes a major histocompatibility complex (MHC) class I-related molecule that binds to the NKG2D receptor on natural killer (NK) cells to trigger release of multiple cytokines and chemokines that in turn contribute to the recruitment and activation of NK cells. The encoded protein undergoes further processing to generate the mature protein that is either anchored to membrane via a glycosylphosphatidylinositol moiety, or secreted. Many malignant cells secrete the encoded protein to evade immunosurveillance by NK cells. This gene is located in a cluster of multiple MHC class I-related genes on chromosome 6. [provided by RefSeq, Jul 2015]

Recommended Dilution

WB: 1:500 - 1:2000

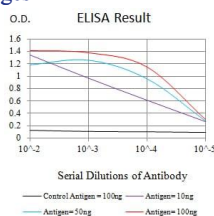
ICC: 1:500 - 1:2000

FCM: 1:200 - 1:400

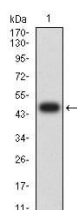
ELISA: 1:10000

Not yet tested in other applications.

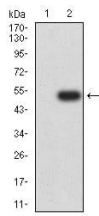
Images



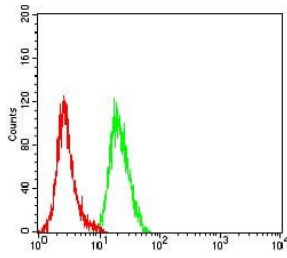
Black line: Control Antigen (100 ng);Purple line: Antigen (10ng); Blue line: Antigen (50 ng); Red line:Antigen (100 ng)



Western blot analysis using ULBP2 mAb against human ULBP2 (AA: 26-216) recombinant protein. (Expected MW is 47.6 kDa)



Western blot analysis using ULBP2 mAb against HEK293 (1) and ULBP2 (AA: 26-216)-hIgGFc transfected HEK293 (2) cell lysate.



Flow cytometric analysis of HeLa cells using ULBP2 mouse mAb (green) and negative control (red).

Storage

Store at 4°C short term. Aliquot and store at -20°C long term.

501 Changsheng S Rd, Nanhu Dist, Jiaxing, Zhejiang, China

Tel: 86 21 31007137 | E-mail: save@bt-laboratory.com | www.bt-laboratory.com