

HMOX1 Monoclonal Antibody

Description

Product type	Antibody
Code	BT-MCA4766
Host	Mouse
Isotype	Mouse IgG1
Size	100μL, 50μL
Immunogen	Purified recombinant fragment of human HMOX1 (AA: 1-110) expressed in E. Coli.
Mol wt	32.8kDa
Species reactivity	Others
Clonality	Monoclonal
Recommended application	IHC,FCM
Concentration	N/A
Full name	N/A
Synonyms	HO-1;HSP32;HMOX1D;bK286B10

This product is for research use only, not for use in human, therapeutic or diagnostic procedure.

Background

Heme oxygenase, an essential enzyme in heme catabolism, cleaves heme to form biliverdin, which is subsequently converted to bilirubin by biliverdin reductase, and carbon monoxide, a putative neurotransmitter. Heme oxygenase activity is induced by its substrate heme and by various nonheme substances. Heme oxygenase occurs as 2 isozymes, an inducible heme oxygenase-1 and a constitutive heme oxygenase-2. HMOX1 and HMOX2 belong to the heme oxygenase family.

Recommended Dilution

WB: 1:500 - 1:2000

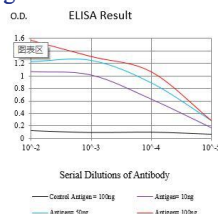
IHC-p: 1:200 - 1:1000

FCM: 1:200 - 1:400

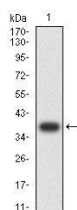
ELISA: 1:10000

Not yet tested in other applications.

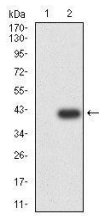
Images



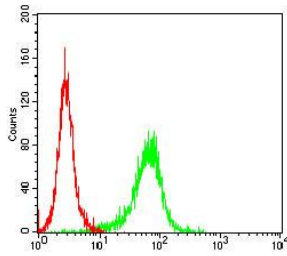
Black line: Control Antigen (100 ng);Purple line: Antigen (10ng); Blue line: Antigen (50 ng); Red line:Antigen (100 ng)



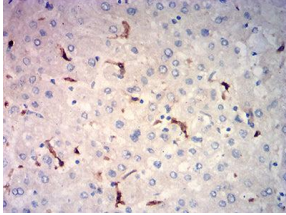
Western blot analysis using HMOX1 mAb against human HMOX1 (AA:1-110) recombinant protein. (Expected MW is 38.8 kDa)



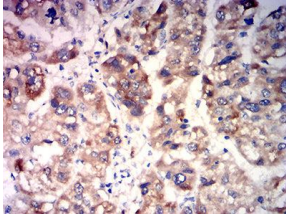
Western blot analysis using HMOX1 mAb against HEK293-6e (1) and HMOX1 (AA: 1-110)-hIgGFc transfected HEK293-6e (2) cell lysate.



Flow cytometric analysis of Jurkat cells using HMOX1 mouse mAb (green) and negative control (red).



Immunohistochemical analysis of paraffin-embedded Liver tissues using HMOX1 mouse mAb with DAB staining.



Immunohistochemical analysis of paraffin-embedded liver cancer tissues using HMOX1 mouse mAb with DAB staining.

Storage

Store at 4°C short term. Aliquot and store at -20°C long term.

501 Changsheng S Rd, Nanhu Dist, Jiaxing, Zhejiang, China

Tel: 86 21 31007137 | E-mail: save@bt-laboratory.com | www.bt-laboratory.com