

## AKT1 Monoclonal Antibody

### Description

<b>Product type</b>	Antibody
<b>Code</b>	BT-MCA4767
<b>Host</b>	Mouse
<b>Isotype</b>	Mouse IgG1
<b>Size</b>	100µL, 50µL
<b>Immunogen</b>	Purified recombinant fragment of human AKT1 (AA: 1-150) expressed in E. Coli.
<b>Mol wt</b>	55.7kDa
<b>Species reactivity</b>	Human,Mouse,Monkey,Rat
<b>Clonality</b>	Monoclonal
<b>Recommended application</b>	WB,ICC,FCM
<b>Concentration</b>	N/A
<b>Full name</b>	N/A
<b>Synonyms</b>	AKT;PKB;RAC;CWS6;PRKBA;PKB-ALPHA;RAC-ALPHA

This product is for research use only, not for use in human, therapeutic or diagnostic procedure.

### Background

N/A

### Recommended Dilution

WB: 1:500 - 1:2000

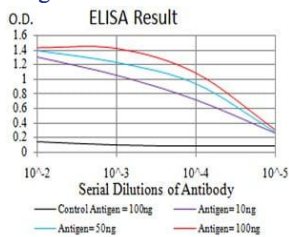
ICC: 1:200 - 1:1000

FCM: 1:200 - 1:400

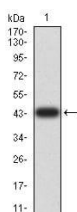
ELISA: 1:10000

Not yet tested in other applications.

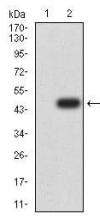
### Images



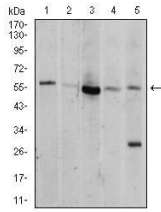
Black line: Control Antigen (100 ng);Purple line: Antigen (10ng); Blue line: Antigen (50 ng); Red line:Antigen (100 ng)



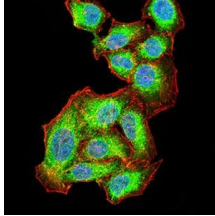
Western blot analysis using AKT1 mAb against human AKT1 (AA: 1-150) recombinant protein.  
(Expected MW is 43.6 kDa)



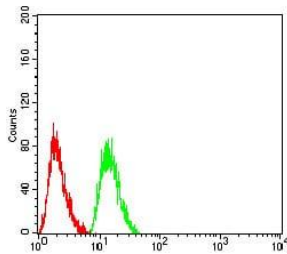
Western blot analysis using AKT1 mAb against HEK293 (1) and AKT1 (AA: 1-150)-hIgGFc transfected HEK293 (2) cell lysate.



Western blot analysis using AKT1 mouse mAb against MCF-7 (1), NIH/3T3 (2), HeLa (3), COS7 (4), and C6 (5) cell lysate.



Immunofluorescence analysis of HepG2 cells using AKT1 mouse mAb (green). Blue: DRAQ5 fluorescent DNA dye. Red: Actin filaments have been labeled with Alexa Fluor-555 phalloidin. Secondary antibody from Fisher (Cat#: 35503)



Flow cytometric analysis of HeLa cells using AKT1 mouse mAb (green) and negative control (red).

### Storage

Store at 4°C short term. Aliquot and store at -20°C long term.

501 Changsheng S Rd, Nanhu Dist, Jiaxing, Zhejiang, China

Tel: 86 21 31007137 | E-mail: [save@bt-laboratory.com](mailto:save@bt-laboratory.com) | [www.bt-laboratory.com](http://www.bt-laboratory.com)