

NPM2 Monoclonal Antibody

Description

Product type	Antibody
Code	BT-MCA4769
Host	Mouse
Isotype	Mouse IgG1
Size	100µL, 50µL
Immunogen	Purified recombinant fragment of human NPM2 (AA: 1-214) expressed in E. Coli.
Mol wt	24.1kDa
Species reactivity	Human
Clonality	Monoclonal
Recommended application	IHC,FCM
Concentration	N/A
Full name	N/A
Synonyms	N/A

This product is for research use only, not for use in human, therapeutic or diagnostic procedure.

Background

NPM2 (Nucleophosmin/Nucleoplasmin 2) is a Protein Coding gene. Gene Ontology (GO) annotations related to this gene include nucleic acid binding and enzyme binding. An important paralog of this gene is NPM1.

Recommended Dilution

WB: 1:500 - 1:2000

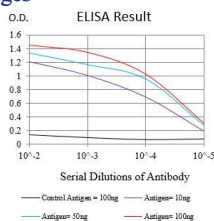
IHC-p: 1:200 - 1:1000

FCM: 1:200 - 1:400

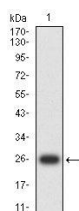
ELISA: 1:10000

Not yet tested in other applications.

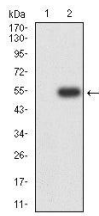
Images



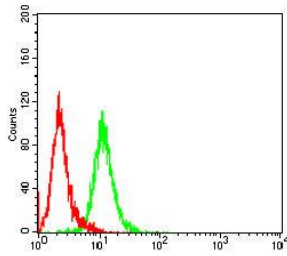
Black line: Control Antigen (100 ng);Purple line: Antigen (10ng); Blue line: Antigen (50 ng); Red line:Antigen (100 ng)



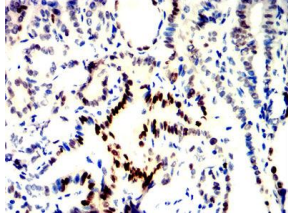
Western blot analysis using NPM2 mAb against human NPM2 (AA: 1-214) recombinant protein. (Expected MW is 27 kDa)



Western blot analysis using NPM2 mAb against HEK293-6e (1) and NPM2 (AA: 1-214)-hIgGFc transfected HEK293-6e (2) cell lysate.



Flow cytometric analysis of HepG2 cells using NPM2 mouse mAb (green) and negative control (red).



Immunohistochemical analysis of paraffin-embedded thyroid cancer tissues using NPM2 mouse mAb with DAB staining.

Storage

Store at 4°C short term. Aliquot and store at -20°C long term.

501 Changsheng S Rd, Nanhu Dist, Jiaxing, Zhejiang, China

Tel: 86 21 31007137 | E-mail: save@bt-laboratory.com | www.bt-laboratory.com