

## KMT2A Monoclonal Antibody

### Description

<b>Product type</b>	Antibody
<b>Code</b>	BT-MCA4770
<b>Host</b>	Mouse
<b>Isotype</b>	Mouse IgG1
<b>Size</b>	100µL, 50µL
<b>Immunogen</b>	Purified recombinant fragment of human KMT2A (AA:150-400) expressed in E. Coli.
<b>Mol wt</b>	431kDa
<b>Species reactivity</b>	Others
<b>Clonality</b>	Monoclonal
<b>Recommended application</b>	IHC,ICC,FCM
<b>Concentration</b>	N/A
<b>Full name</b>	N/A
<b>Synonyms</b>	HRX;MLL;MLL1;TRX1;ALL-1;CXXC7;HTRX1;MLL1A;WDSTS

**This product is for research use only, not for use in human, therapeutic or diagnostic procedure.**

### Background

This gene encodes a transcriptional coactivator that plays an essential role in regulating gene expression during early development and hematopoiesis. The encoded protein contains multiple conserved functional domains. One of these domains, the SET domain, is responsible for its histone H3 lysine 4 (H3K4) methyltransferase activity which mediates chromatin modifications associated with epigenetic transcriptional activation. This protein is processed by the enzyme Taspase 1 into two fragments, MLL-C and MLL-N. These fragments reassociate and further assemble into different multiprotein complexes that regulate the transcription of specific target genes, including many of the HOX genes. Multiple chromosomal translocations involving this gene are the cause of certain acute lymphoid leukemias and acute myeloid leukemias. Alternate splicing results in multiple transcript variants.

### Recommended Dilution

WB: 1:500 - 1:2000

IHC-p: 1:200 - 1:1000

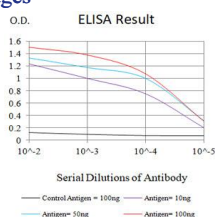
ICC: 1:200 - 1:1000

FCM: 1:200 - 1:400

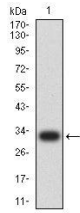
ELISA: 1:10000

Not yet tested in other applications.

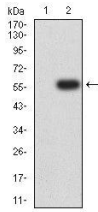
### Images



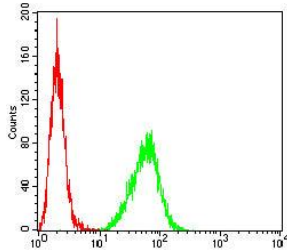
Black line: Control Antigen (100 ng); Purple line: Antigen (10ng); Blue line: Antigen (50 ng); Red line: Antigen (100 ng)



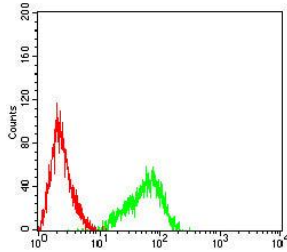
Western blot analysis using KMT2A mAb against human KMT2A (AA:150-400) recombinant protein. (Expected MW is 30.9kDa)



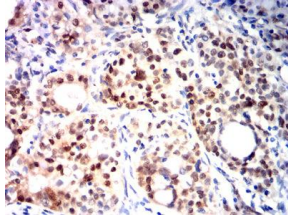
Western blot analysis using KMT2A mAb against HEK293-6e (1) and human KMT2A (AA:150-400)-hIgGfc transfected HEK293-6e (2) cell lysate.



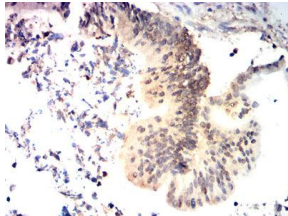
Flow cytometric analysis of HeLa cells using KMT2A mouse mAb (green) and negative control (red).



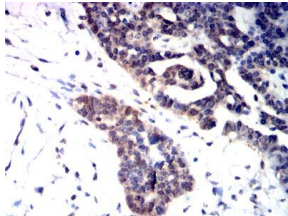
Flow cytometric analysis of Raji cells using KMT2A mouse mAb (green) and negative control (red).



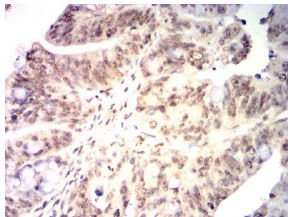
Immunohistochemical analysis of paraffin-embedded cervical cancer tissues using KMT2A mouse mAb with DAB staining.



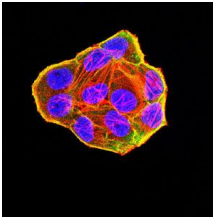
Immunohistochemical analysis of paraffin-embedded colon cancer tissues using KMT2A mouse mAb with DAB staining.



Immunohistochemical analysis of paraffin-embedded ovarian cancer tissues using KMT2A mouse mAb with DAB staining.



Immunohistochemical analysis of paraffin-embedded rectal cancer tissues using KMT2A mouse mAb with DAB staining.



Immunofluorescence analysis of HeLa cells using KMT2A mouse mAb (green). Blue: DRAQ5 fluorescent DNA dye. Red: Actin filaments have been labeled with Alexa Fluor- 555 phalloidin. Secondary antibody from Fisher (Cat#: 35503)

### Storage

Store at 4°C short term. Aliquot and store at -20°C long term.

501 Changsheng S Rd, Nanhu Dist, Jiaxing, Zhejiang, China

Tel: 86 21 31007137 | E-mail: [save@bt-laboratory.com](mailto:save@bt-laboratory.com) | [www.bt-laboratory.com](http://www.bt-laboratory.com)