

RAB11FIP1 Monoclonal Antibody

Description

Product type	Antibody
Code	BT-MCA4773
Host	Mouse
Isotype	Mouse IgG1
Size	100µL, 50µL
Immunogen	Purified recombinant fragment of human RAB11FIP1 (AA: 130-271) expressed in E. Coli.
Mol wt	137.2kDa
Species reactivity	Human,Mouse
Clonality	Monoclonal
Recommended application	WB,IHC,ICC,FCM
Concentration	N/A
Full name	N/A
Synonyms	RCP;NOEL1A;rab11-FIP1

This product is for research use only, not for use in human, therapeutic or diagnostic procedure.

Background

N/A

Recommended Dilution

WB: 1:500 - 1:2000

IHC-p: 1:200 - 1:1000

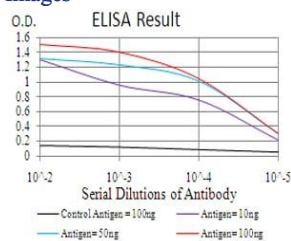
ICC: 1:200 - 1:1000

FCM: 1:200 - 1:400

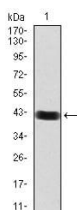
ELISA: 1:10000

Not yet tested in other applications.

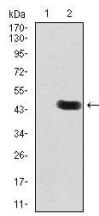
Images



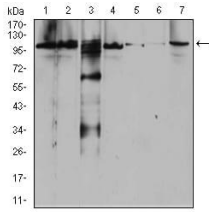
Black line: Control Antigen (100 ng); Purple line: Antigen(10ng); Blue line: Antigen (50 ng); Red line: Antigen (100 ng);



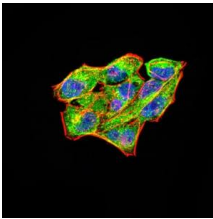
Western blot analysis using RAB11FIP1 mAb against human RAB11FIP1 (AA: 130-271) recombinant protein. (Expected MW is 41.7 kDa)



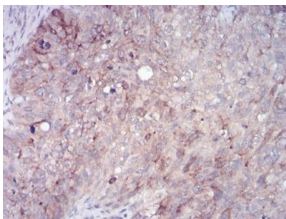
Western blot analysis using RAB11FIP1 mAb against HEK293 (1) and RAB11FIP1 (AA: 130-271)-hlgGfc transfected HEK293 (2) cell lysate.



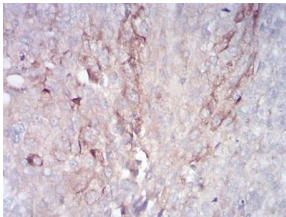
Western blot analysis using RAB11FIP1 mouse mAb against Raji (1), SW620 (2), A431 (3), SW480 (4), HepG2 (5), Hela (6), and NIH3T3 (7) cell lysate.



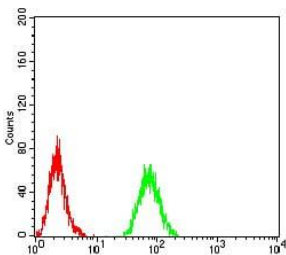
Immunofluorescence analysis of HeLa cells using RAB11FIP1 mouse mAb (green). Blue: DRAQ5 fluorescent DNA dye. Red: Actin filaments have been labeled with Alexa Fluor- 555 phalloidin. Secondary antibody from Fisher (Cat#: 35503)



Immunohistochemical analysis of paraffin-embedded cervical cancer tissues using RAB11FIP1 mouse mAb with DAB staining.



Immunohistochemical analysis of paraffin-embedded bladder cancer tissues using RAB11FIP1 mouse mAb with DAB staining.



Flow cytometric analysis of Raji cells using RAB11FIP1 mouse mAb (green) and negative control (red).

Storage

Store at 4°C short term. Aliquot and store at -20°C long term.

501 Changsheng S Rd, Nanhu Dist, Jiaxing, Zhejiang, China

Tel: 86 21 31007137 | E-mail: save@bt-laboratory.com | www.bt-laboratory.com