

## Ki67 Monoclonal Antibody

### Description

<b>Product type</b>	Antibody
<b>Code</b>	BT-MCA4777
<b>Host</b>	Mouse
<b>Isotype</b>	Mouse IgG1
<b>Size</b>	100µL, 50µL
<b>Immunogen</b>	Purified recombinant fragment of Ki167 (aa3118-3256) expressed in E. Coli.
<b>Mol wt</b>	358kDa
<b>Species reactivity</b>	Human
<b>Clonality</b>	Monoclonal
<b>Recommended application</b>	Others
<b>Concentration</b>	N/A
<b>Full name</b>	N/A
<b>Synonyms</b>	KIA;Ki-67;MKI67

This product is for research use only, not for use in human, therapeutic or diagnostic procedure.

### Background

Ki67: antigen identified by monoclonal antibody Ki-67. Ki67 antigen is the prototypic cell cycle related nuclear protein, expressed by proliferating cells in all phases of the active cell cycle (G1, S, G2 and M phase). It is absent in resting (G0) cells. Ki67 antibodies are useful in establishing the cell growing fraction in neoplasms (immunohistochemically quantified by determining the number of Ki67 positive cells among the total number of resting cells = Ki67 index). In neoplastic tissues the prognostic value is comparable to the tritiated thymidine labelling index. The correlation between low Ki67 index and histologically low grade tumours is strong. Ki67 is routinely used as a neuronal marker of cell cycling and proliferation.

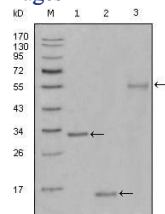
### Recommended Dilution

WB: 1:500 - 1:2000

ELISA: 1:10000

Not yet tested in other applications.

### Images



Western blot analysis using Ki67 mouse mAb against truncated Trx-Ki67 recombinant protein(1), truncated Ki67 (aa3118-3256)-His recombinant protein(2) and truncated Ki67 (aa3118-3256)-hlgGfc transfected CHO-K1 cell lysate(3).

### Storage

Store at 4°C short term. Aliquot and store at -20°C long term.