

CCRL2 Monoclonal Antibody

Description

Product type	Antibody
Code	BT-MCA4780
Host	Mouse
Isotype	Mouse IgG1
Size	100µL, 50µL
Immunogen	Purified recombinant fragment of human CCRL2 expressed in E. Coli.
Mol wt	39.5kDa
Species reactivity	Others
Clonality	Monoclonal
Recommended application	FCM
Concentration	N/A
Full name	N/A
Synonyms	HCR;CKRX;CRAM;ACKR5;CRAM-A;

This product is for research use only, not for use in human, therapeutic or diagnostic procedure.

Background

This gene encodes a chemokine receptor like protein, which is predicted to be a seven transmembrane protein and most closely related to CCR1. Chemokines and their receptors mediated signal transduction are critical for the recruitment of effector immune cells to the site of inflammation. This gene is expressed at high levels in primary neutrophils and primary monocytes, and is further upregulated on neutrophil activation and during monocyte to macrophage differentiation. The function of this gene is unknown. This gene is mapped to the region where the chemokine receptor gene cluster is located.

Recommended Dilution

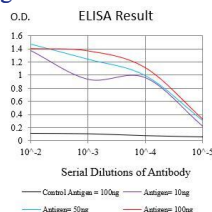
WB: 1:500 - 1:2000

FCM: 1:200 - 1:400

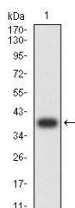
ELISA: 1:10000

Not yet tested in other applications.

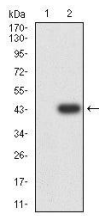
Images



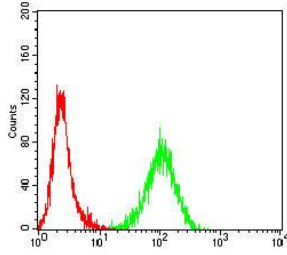
Black line: Control Antigen (100 ng);Purple line: Antigen (10ng); Blue line: Antigen (50 ng); Red line:Antigen (100 ng)



Western blot analysis using CCRL2 mAb against human CCRL2 recombinant protein. (Expected MW is 38.8 kDa)



Western blot analysis using CCRL2 mAb against HEK293-6e (1) and CCRL2-hIgGf transfected HEK293-6e (2) cell lysate.



Flow cytometric analysis of Jurkat cells using CCRL2 mouse mAb (green) and negative control (red).

Storage

Store at 4°C short term. Aliquot and store at -20°C long term.

501 Changsheng S Rd, Nanhu Dist, Jiaxing, Zhejiang, China

Tel: 86 21 31007137 | E-mail: save@bt-laboratory.com | www.bt-laboratory.com