

G6D Monoclonal Antibody

Description

Product type	Antibody
Code	BT-MCA4807
Host	Mouse
Isotype	Mouse IgG1
Size	100µL, 50µL
Immunogen	Purified recombinant fragment of human G6D (AA: 20-104) expressed in E. Coli.
Mol wt	13.7kDa
Species reactivity	Others
Clonality	Monoclonal
Recommended application	WB,ICC,FCM
Concentration	N/A
Full name	N/A
Synonyms	LY6G6D;NG25;LY6-D;MEGT1;C6orf23

This product is for research use only, not for use in human, therapeutic or diagnostic procedure.

Background

LY6G6D belongs to a cluster of leukocyte antigen-6 (LY6) genes located in the major histocompatibility complex (MHC) class III region on chromosome 6. Members of the LY6 superfamily typically contain 70 to 80 amino acids, including 8 to 10 cysteines. Most LY6 proteins are attached to the cell surface by a glycosylphosphatidylinositol (GPI) anchor that is directly involved in signal transduction (Mallya et al., 2002 [PubMed 12079290]).[supplied by OMIM, Apr 2009]

Recommended Dilution

WB: 1:500 - 1:2000

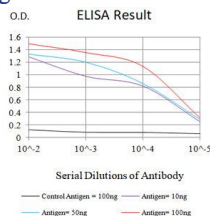
ICC: 1:200 - 1:1000

FCM: 1:200 - 1:400

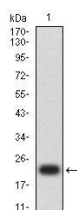
ELISA: 1:10000

Not yet tested in other applications.

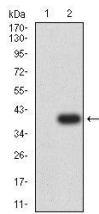
Images



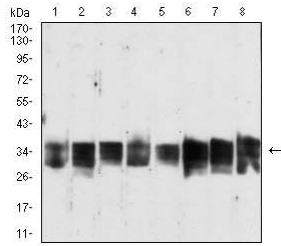
Black line: Control Antigen (100 ng);Purple line: Antigen (10ng); Blue line: Antigen (50 ng); Red line:Antigen (100 ng)



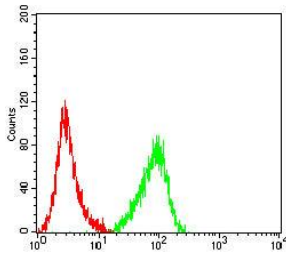
Western blot analysis using G6D mAb against human G6D (AA: 20-104) recombinant protein.
(Expected MW is 21.4 kDa)



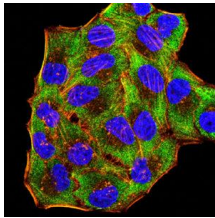
Western blot analysis using G6D mAb against HEK293-6e (1) and G6D (AA: 20-104)-hIgGFc transfected HEK293-6e (2) cell lysate.



Western blot analysis using G6D mouse mAb against Jurkat (1), MCF-7 (2), A549 (3), K562 (4), HeLa (5), C6 (6), COS-7 (7), and NIH/3T3 (8) cell lysate.



Flow cytometric analysis of Jurkat cells using G6D mouse mAb (green) and negative control (red).



Immunofluorescence analysis of HeLa cells using G6D mouse mAb (green). Blue: DRAQ5 fluorescent DNA dye. Red: Actin filaments have been labeled with Alexa Fluor- 555 phalloidin. Secondary antibody from Fisher (Cat#: 35503)

Storage

Store at 4°C short term. Aliquot and store at -20°C long term.

501 Changsheng S Rd, Nanhui Dist, Jiaxing, Zhejiang, China

Tel: 86 21 31007137 | E-mail: save@bt-laboratory.com | www.bt-laboratory.com