

BTLA Monoclonal Antibody

Description

Product type	Antibody
Code	BT-MCA4810
Host	Mouse
Isotype	Mouse IgG1
Size	100µL, 50µL
Immunogen	Purified recombinant fragment of human BTLA (AA: extra 31-157) expressed in E. Coli.
Mol wt	32.8kDa
Species reactivity	Human
Clonality	Monoclonal
Recommended application	ICC
Concentration	N/A
Full name	N/A
Synonyms	BTLA1;CD272

This product is for research use only, not for use in human, therapeutic or diagnostic procedure.

Background

N/A

Recommended Dilution

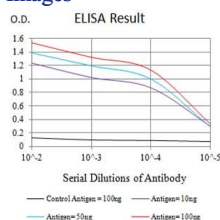
WB: 1:500 - 1:2000

ICC: 1:100 - 1:500

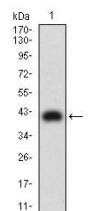
ELISA: 1:10000

Not yet tested in other applications.

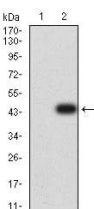
Images



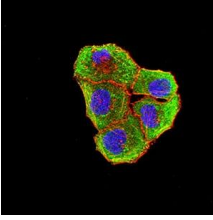
Black line: Control Antigen (100 ng); Purple line: Antigen (10ng); Blue line: Antigen (50 ng); Red line: Antigen (100 ng)



Western blot analysis using BTLA mAb against human BTLA (AA: extra 31-157) recombinant protein. (Expected MW is 41 kDa)



Western blot analysis using BTLA mAb against HEK293 (1) and BTLA (AA: extra 31-157)-hlgGfC transfected HEK293 (2) cell lysate.



Immunofluorescence analysis of HeLa cells using BTLA mouse mAb (green). Blue: DRAQ5 fluorescent DNA dye. Red: Actin filaments have been labeled with Alexa Fluor- 555 phalloidin. Secondary antibody from Fisher (Cat#: 35503)

Storage

Store at 4°C short term. Aliquot and store at -20°C long term.

501 Changsheng S Rd, Nanhu Dist, Jiaxing, Zhejiang, China

Tel: 86 21 31007137 | E-mail: save@bt-laboratory.com | www.bt-laboratory.com