

SOCS3 Monoclonal Antibody

Description

Product type	Antibody
Code	BT-MCA4817
Host	Mouse
Isotype	Mouse IgG1
Size	100µL, 50µL
Immunogen	Purified recombinant fragment of human SOCS3 (AA: 1-225) expressed in E. Coli.
Mol wt	24.8KDa
Species reactivity	Human
Clonality	Monoclonal
Recommended application	IHC,ICC,FCM
Concentration	N/A
Full name	N/A
Synonyms	CIS3;SSI3;ATOD4;Cish3;SSI-3;SOCS-3

This product is for research use only, not for use in human, therapeutic or diagnostic procedure.

Background

This gene encodes a member of the STAT-induced STAT inhibitor (SSI), also known as suppressor of cytokine signaling (SOCS), family. SSI family members are cytokine-inducible negative regulators of cytokine signaling. The expression of this gene is induced by various cytokines, including IL6, IL10, and interferon (IFN)-gamma. The protein encoded by this gene can bind to JAK2 kinase, and inhibit the activity of JAK2 kinase. Studies of the mouse counterpart of this gene suggested the roles of this gene in the negative regulation of fetal liver hematopoiesis, and placental development.

Recommended Dilution

WB: 1:500 - 1:2000

IHC-p: 1:200 - 1:1000

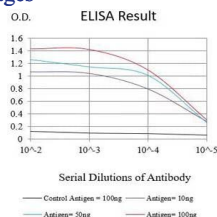
ICC: 1:200 - 1:1000

FCM: 1:200 - 1:400

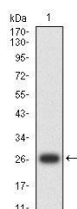
ELISA: 1:10000

Not yet tested in other applications.

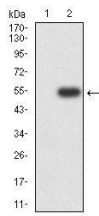
Images



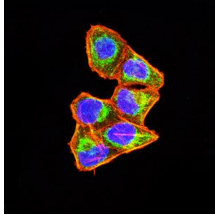
Black line: Control Antigen (100 ng);Purple line: Antigen (10ng); Blue line: Antigen (50 ng); Red line:Antigen (100 ng)



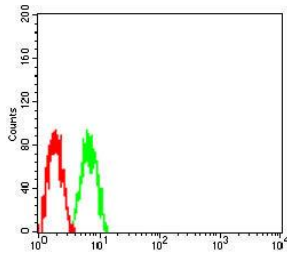
Western blot analysis using SOCS3 mAb against human SOCS3 (AA: 1-225) recombinant protein. (Expected MW is 27.7 kDa)



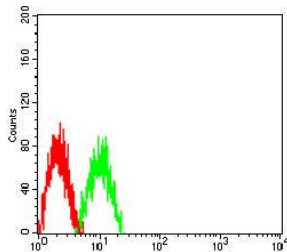
Western blot analysis using SOCS3 mAb against HEK293-6e (1) and SOCS3 (AA:full 1-225)-hlgGFc transfected HEK293-6e (2) cell lysate.



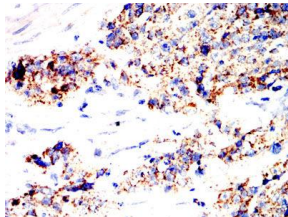
Immunofluorescence analysis of HeLa cells using SOCS3 mouse mAb (green). Blue: DRAQ5 fluorescent DNA dye. Red: Actin filaments have been labeled with Alexa Fluor- 555 phalloidin. Secondary antibody from Fisher (Cat#: 35503)



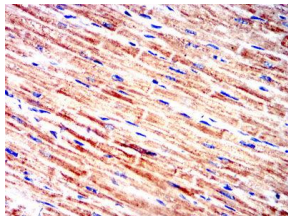
Flow cytometric analysis of Jurkat cells using SOCS3 mouse mAb (green) and negative control (red).



Flow cytometric analysis of HeLa cells using SOCS3 mouse mAb (green) and negative control (red).



Immunohistochemical analysis of paraffin-embedded esophageal cancer tissues using SOCS3 mouse mAb with DAB staining.



Immunohistochemical analysis of paraffin-embedded muscle tissues using SOCS3 mouse mAb with DAB staining.

Storage

Store at 4°C short term. Aliquot and store at -20°C long term.

501 Changsheng S Rd, Nanhui Dist, Jiading, Zhejiang, China

Tel: 86 21 31007137 | E-mail: save@bt-laboratory.com | www.bt-laboratory.com