

## Fibulin 5 Monoclonal Antibody

### Description

<b>Product type</b>	Antibody
<b>Code</b>	BT-MCA4823
<b>Host</b>	Mouse
<b>Isotype</b>	Mouse IgG1
<b>Size</b>	100µL, 50µL
<b>Immunogen</b>	Purified recombinant fragment of Fibulin 5 expressed in E. Coli.
<b>Mol wt</b>	N/A
<b>Species reactivity</b>	Human
<b>Clonality</b>	Monoclonal
<b>Recommended application</b>	IHC
<b>Concentration</b>	N/A
<b>Full name</b>	N/A
<b>Synonyms</b>	EVEC;UP50;ARMD3;DANCE

**This product is for research use only, not for use in human, therapeutic or diagnostic procedure.**

### Background

Fibulin 5 (FBLN5), with 448-amino acid protein (about 50kDa), is a recently discovered multifunctional extracellular matrix protein that mediates endothelial cell adhesion through integrin ligation, regulates cell growth and motility in a context-specific manner, and prevents elastinopathy in vivo. Fibulin-5 is abundantly expressed in great vessels and cardiac valves during embryogenesis, and in many adult tissues including the aorta, lung, uterus and skin, all of which contain abundant elastic fibres. Decreased fibulin-5 may contribute to the pathogenesis of aortic dissection by impairing elastic fiber assembly. Fibulin-5 is also a good marker of skin ageing and that the earlier loss of fibulin-5 may involve age-dependent changes in other elastic fibre components.

### Recommended Dilution

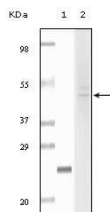
WB: 1:500 - 1:2000

IHC-p: 1:200 - 1:1000

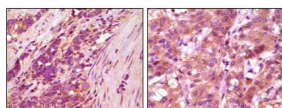
ELISA: 1:10000

Not yet tested in other applications.

### Images



Western blot analysis using Fibulin5 mouse mAb against truncated fibulin5 recombinant protein (1) and Hela cell lysate (2).



Immunohistochemical analysis of paraffin-embedded human stomach carcinoma (left) and breast carcinoma (right), showing cytoplasmic localization using fibulin5 mouse mAb with DAB staining.

### Storage

Store at 4°C short term. Aliquot and store at -20°C long term.

501 Changsheng S Rd, Nanhu Dist, Jiaxing, Zhejiang, China  
Tel: 86 21 31007137 | E-mail: [save@bt-laboratory.com](mailto:save@bt-laboratory.com) | [www.bt-laboratory.com](http://www.bt-laboratory.com)