

## CD319 Monoclonal Antibody

### Description

<b>Product type</b>	Antibody
<b>Code</b>	BT-MCA4826
<b>Host</b>	Mouse
<b>Isotype</b>	Mouse IgG1
<b>Size</b>	100µL, 50µL
<b>Immunogen</b>	Purified recombinant fragment of human CD319 (AA: extra(23-226)) expressed in E. Coli.
<b>Mol wt</b>	37.4kda
<b>Species reactivity</b>	Others
<b>Clonality</b>	Monoclonal
<b>Recommended application</b>	WB,IHC,FCM
<b>Concentration</b>	N/A
<b>Full name</b>	N/A
<b>Synonyms</b>	19A;CS1;SLAMF7;CRACC

**This product is for research use only, not for use in human, therapeutic or diagnostic procedure.**

### Background

Self-ligand receptor of the signaling lymphocytic activation molecule (SLAM) family. SLAM receptors triggered by homo- or heterotypic cell-cell interactions are modulating the activation and differentiation of a wide variety of immune cells and thus are involved in the regulation and interconnection of both innate and adaptive immune response. Activities are controlled by presence or absence of small cytoplasmic adapter proteins, SH2D1A/SAP and/or SH2D1B/EAT-2. Isoform 1 mediates NK cell activation through a SH2D1A-independent extracellular signal-regulated ERK-mediated pathway (PubMed:11698418). Positively regulates NK cell functions by a mechanism dependent on phosphorylated SH2D1B. Downstream signaling implicates PLCG1, PLCG2 and PI3K (PubMed:16339536). In addition to heterotypic NK cells-target cells interactions also homotypic interactions between NK cells may contribute to activation. However, in the absence of SH2D1B, inhibits NK cell function. Acts also inhibitory in T-cells (By similarity). May play a role in lymphocyte adhesion (PubMed:11802771). In LPS-activated monocytes negatively regulates production of proinflammatory cytokines (PubMed:23695528).

### Recommended Dilution

WB: 1:500 - 1:2000

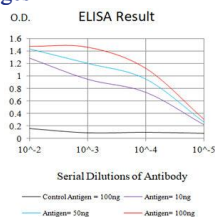
IHC-p: 1:200 - 1:1000

FCM: 1:200 - 1:400

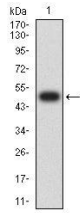
ELISA: 1:10000

Not yet tested in other applications.

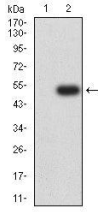
### Images



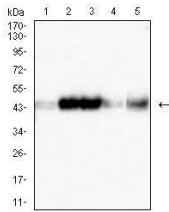
Black line: Control Antigen (100 ng);Purple line: Antigen (10ng); Blue line: Antigen (50 ng); Red line:Antigen (100 ng)



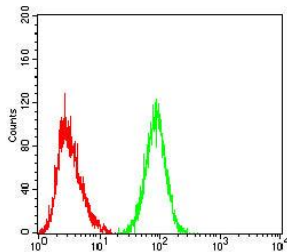
Western blot analysis using CD319 mAb against human CD319 (AA: extra(23-226)) recombinant protein. (Expected MW is 48.3kDa)



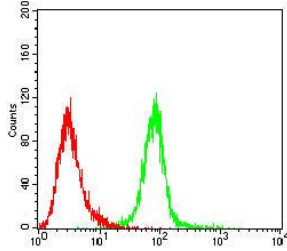
Western blot analysis using CD319 mAb against HEK293-6e (1) and CD319 (AA: extra(23-226))-hlgGfC transfected HEK293-6e (2) cell lysate.



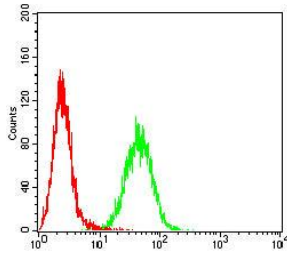
Western blot analysis using CD319 mouse mAb against K562 (1), HL-60 (2), Ramos (3), Jurkat (4), and THP-1 (5) cell lysate.



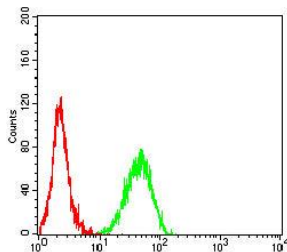
Flow cytometric analysis of K562 cells using CD319 mouse mAb (green) and negative control (red).



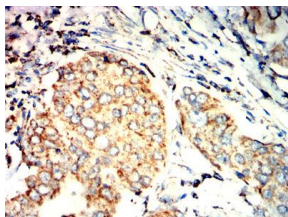
Flow cytometric analysis of U937 cells using CD319 mouse mAb (green) and negative control (red).



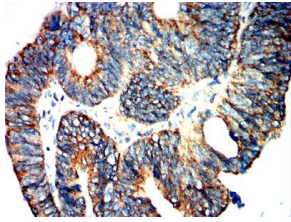
Flow cytometric analysis of THP-1 cells using CD319 mouse mAb (green) and negative control (red).



Flow cytometric analysis of MOLT4 cells using CD319 mouse mAb (green) and negative control (red).



Immunohistochemical analysis of paraffin-embedded breast cancer tissues using CD319 mouse mAb with DAB staining.



Immunohistochemical analysis of paraffin-embedded rectal cancer tissues using CD319 mouse mAb with DAB staining.

### Storage

Store at 4°C short term. Aliquot and store at -20°C long term.

501 Changsheng S Rd, Nanhu Dist, Jiaxing, Zhejiang, China

Tel: 86 21 31007137 | E-mail: [save@bt-laboratory.com](mailto:save@bt-laboratory.com) | [www.bt-laboratory.com](http://www.bt-laboratory.com)