

CD24 Monoclonal Antibody

Description

| | |
|--------------------------------|---|
| Product type | Antibody |
| Code | BT-MCA4836 |
| Host | Mouse |
| Isotype | Mouse IgG1 |
| Size | 100µL, 50µL |
| Immunogen | Purified recombinant fragment of human CD24 (AA: 15-80) expressed in E. Coli. |
| Mol wt | 8kDa |
| Species reactivity | Human |
| Clonality | Monoclonal |
| Recommended application | FCM |
| Concentration | N/A |
| Full name | N/A |
| Synonyms | CD24A |

This product is for research use only, not for use in human, therapeutic or diagnostic procedure.

Background

N/A

Recommended Dilution

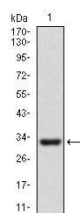
WB: 1:500 - 1:2000

FCM: 1:200 - 1:400

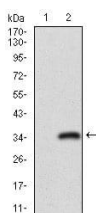
ELISA: 1:10000

Not yet tested in other applications.

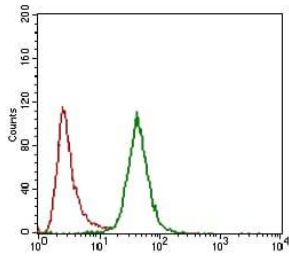
Images



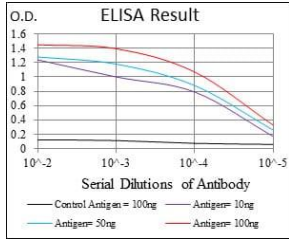
Western blot analysis using CD24 mAb against human CD24 recombinant protein. (Expected MW is 32.1 kDa)



Western blot analysis using CD24 mAb against HEK293 (1) and CD24 (AA: 15-80)-hIgGfc transfected HEK293 (2) cell lysate.



Flow cytometric analysis of HeLa cells using CD24 mouse mAb (green) and negative control (red).



Black line: Control Antigen (100 ng); Purple line: Antigen(10ng); Blue line: Antigen (50 ng); Red line: Antigen (100 ng);

Storage

Store at 4°C short term. Aliquot and store at -20°C long term.

501 Changsheng S Rd, Nanhu Dist, Jiaxing, Zhejiang, China

Tel: 86 21 31007137 | E-mail: save@bt-laboratory.com | www.bt-laboratory.com